

---

# Undergraduate Nursing Students Reflections in the Faculty of Health Sciences

Supervised by: Dr. Neslihan Onder Ozdemir

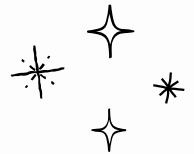
Bursa Uludağ University

Designed by: Nurcan Çelik 202210185

Department of Nursing, Faculty of Health Sciences

Bursa Uludağ University

---



## Team 1

The problems faced by nurses in Turkey.

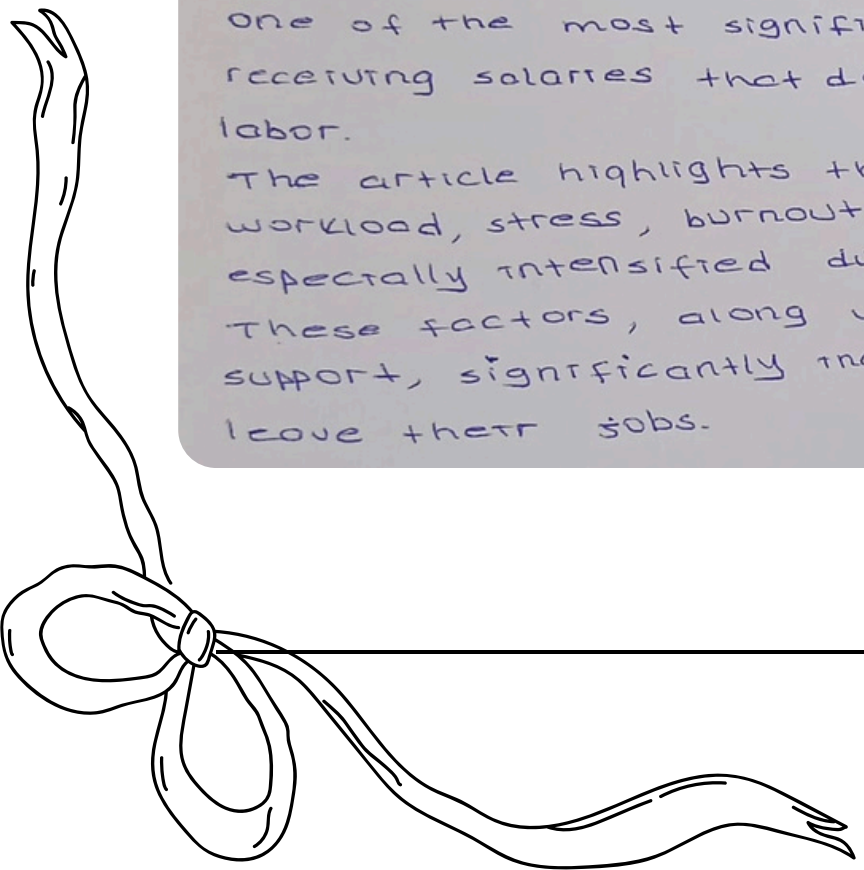
Newly graduated nurses face ethical challenges that hinder their professional adaptation and patient safety; supportive training and mentorship can help reduce these issues.

Long working hours, low job satisfaction, shift work and poor working conditions can lead to stress and burnout among nurses, and these factors are influential in their career development.

Nurses working in clinical practice in Turkey are often faced with intense expectations. Their empathetic approach is frequently exploited by patients, leading nurses to experience burnout due to long working hours. In addition, one of the most significant challenges they face is receiving salaries that do not reflect the value of their labor.

The article highlights that nurses face high levels of workload, stress, burnout and work-family conflict, especially intensified during the COVID-19 pandemic. These factors, along with insufficient organizational support, significantly increase their intention to leave their jobs.

202210023 Beyzanur Yüktük  
202210154 İlayda Arınlık  
202210054 Sudenaz Akpınar  
202210031 Tuğçe Sarı



---

Team 2

Title of the research article we have chosen  
nurse doctor patient interaction. Florence Nightingale Journal of Nursing

The communication between nurses and doctors and patients plays a major role in the success of the treatment process. Open, honest, empathetic and understanding communication ensures that the patient feels safe, receives accurate information about their health status and actively participates in the treatment process. When healthcare professionals see the patient not just as a case but as an individual with feelings and needs, it contributes positively to both physical and psychological recovery. Therefore, effective communication goes beyond the transfer of medical information and includes establishing a human connection.

202210071 Rana Kel  
202210052 Sude Dönmez

---

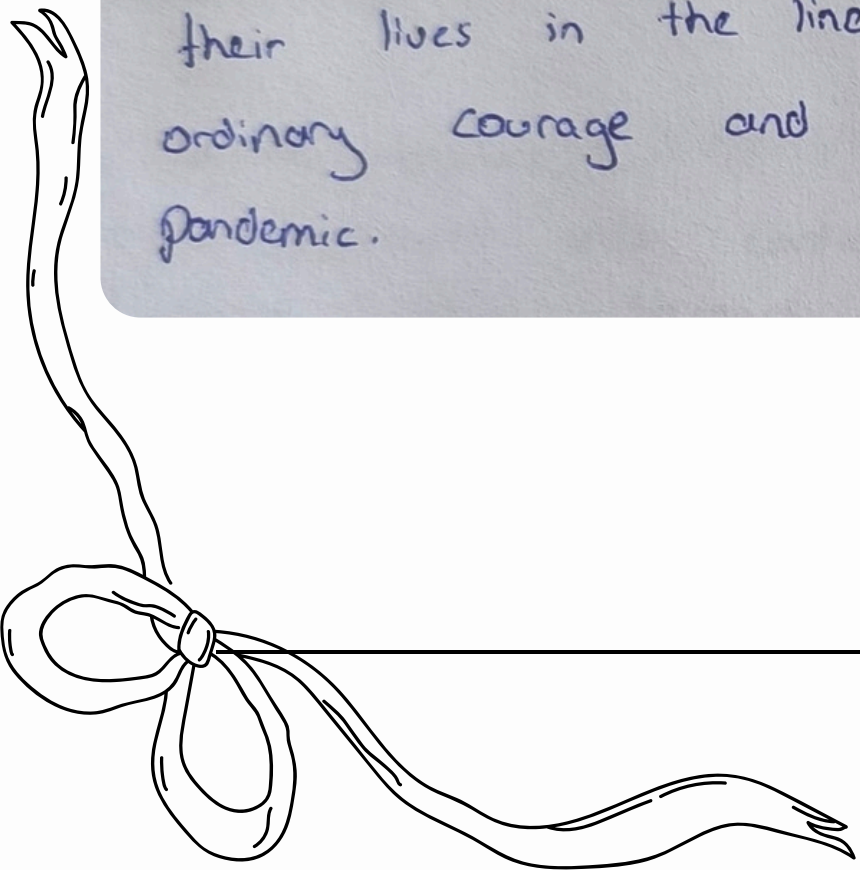


## TEAM 3

Nurses as the leading fighters during the COVID-19 pandemics:  
Self-transcendence

During COVID-19 many nurses had to stay away from their families for extended periods to prevent the risk of transmission. Some could not see their children for days or even weeks. Tragically some nurses contracted the virus despite precautions and lost their lives in the line of duty. These sacrifices highlight the extraordinary courage and dedication shown by nurses throughout the pandemic.

202210096 Hayrunisa  
Gümüş



#### TEAM 4

Title of the research article we have chosen  
"illness and disease : An empirical - ethical viewpoint"

This article examines how the concept of "disease"  
and "illness" differ from both scientific and ethical  
perspectives. The main idea is that diseases should not  
be assessed solely through biological signs but  
also through the patient's personal experience,  
as this is essential for ethically responsible and  
holistic healthcare.

202210085 Elif Yüksel

202210081 Emine Kayır

202210084 Esra Demirel

202210083 Kübra Acar

202210082 Rümeyza İrem Sezgin

202210044 Özcan Ateş

202210075 Yusuf Emre Şen

Team: 5

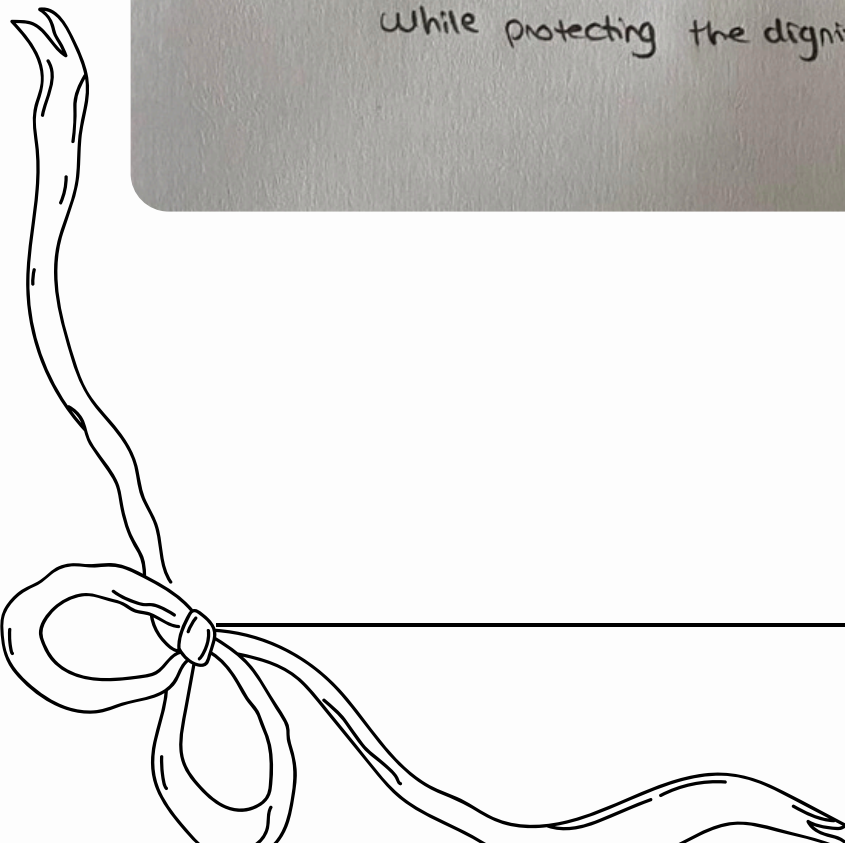
American Nurses Association (ANA) (2015).

Code of Ethics for Nurses With Interpretive Statements.

The main idea of ethical principles in nursing is to provide care in a fair, honest, responsible, and compassionate manner while respecting individuals' rights. This includes acting in the patient's best interest, avoiding harm, maintaining confidentiality and supporting the patient's autonomy in making decisions.

Ethical principles in nursing aim to ensure high-quality and humane care while protecting the dignity and rights of the patient.

202210128 Duygu Uslu  
202210109 Gizem Oktay  
202210146 Menekşe Sarıoğlu  
202210017 Selma Yavuz



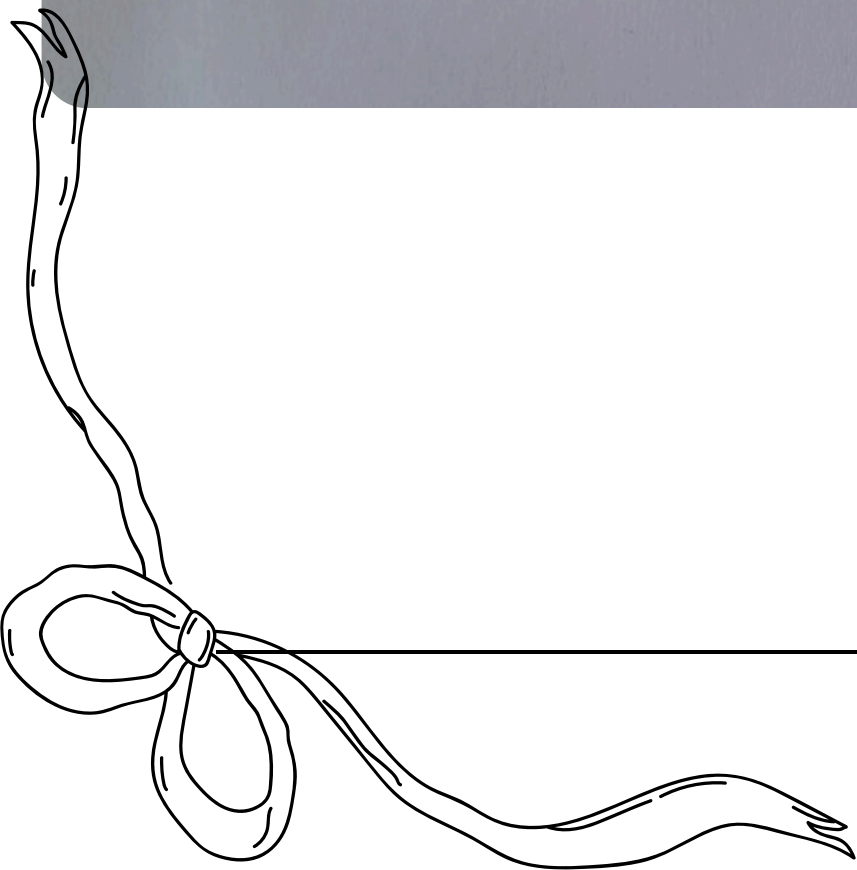
---

TEAM 6

Intensive care unit (ICU) Nurse and outpatient clinic Nurse.

The intensive care unit (ICU) nurse provides advanced care to critically ill patients, while the outpatient clinic nurse offers planned and guiding healthcare services to ambulatory patients.

202110143 Elma Zalli  
202210197 Gülçin Fahri  
202210192 Nergis Taştan  
202210207 Selvinaz Miraliyev



---

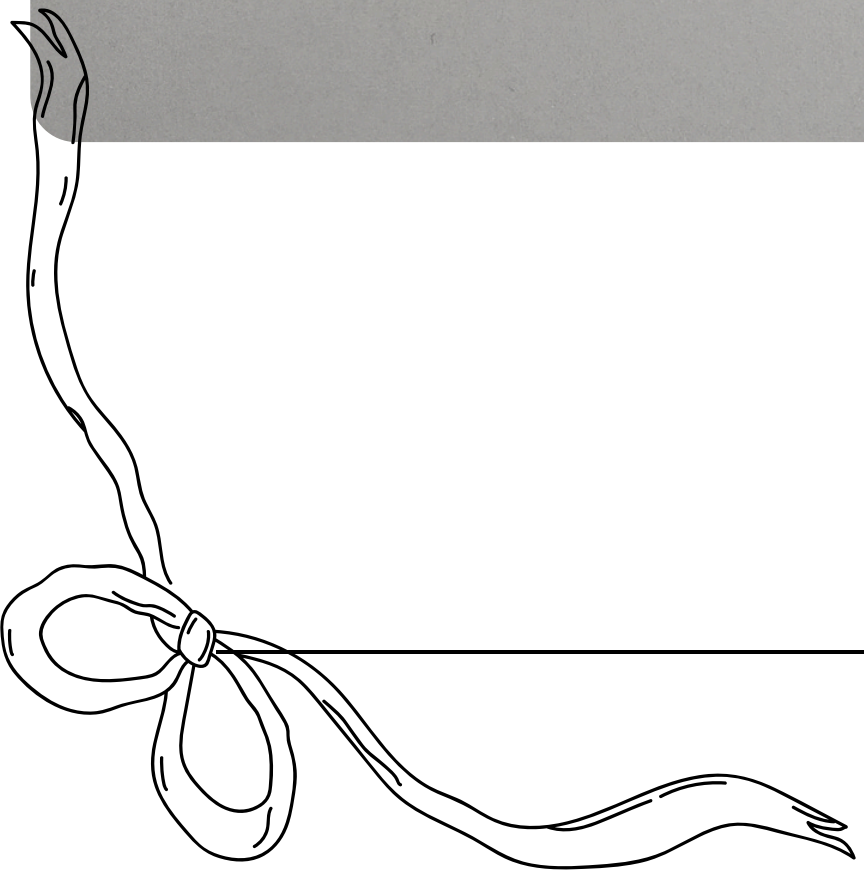
TEAM 7

Safe management of wastes from health care activities.

Medical waste is considered life threatening thus, we must focus on recycling rather than throwing away.

202210010 Esmâ ÜL Hüsna  
Noğay

202210116 Neslihan Orhan  
202210129 Semanur Çelik



---

## TEAM 8

### Preoperative and Postoperative Care

#### main idea,

Preoperative and postoperative patient care is one of the fundamental aspects of nursing practice and has a direct impact on patient safety, recovery and quality of life. Effective management of this process depends on the nurse's knowledge, attention and empathy.

202210115 Arzu Maraklı  
202210122 Elif Özdemir  
202210055 Hayriye Kahraman  
202210024 İclal Zeynep Güldal  
202210027 Rukiye Erkul  
202210028 Sude Tokdemir

---



### TEAM TEAM 3

Differences and similarities in space of practice between registered nurses and nurse specialists in emergency care: an interview study.

Ward nurses, intensive care nurses and emergency nurses have different job descriptions. The most important points is to provide the necessary intervention to the patient at the time right time and the communication of the nurses. While emergency nurses should be ready to intervene more quickly in patients with life-threatening conditions, intensive care and ward nurses should routinely intervene in patients. Communication with patients and within the team is also important. Since emergency nurses intervene quickly, their communication within the team should be good. In addition to their communication within the team, ward and intensive care nurses should also have good communication with patients. Because they deal with patients who stay in the hospital for a long time.

202210088 Ece Köseoğlu  
202210099 Ezgi Toker  
202210102 Zeynep Gırşen

## TEAM 10

American Academy of Ambulatory Care Nursing Role of the Registered Nurse in Ambulatory Care Position Statement 2022

Different nursing roles are specialized based on patient needs. While ICU (intensive care unit) nurses provide critical, continuous monitoring and care, outpatient clinic nurses focus on planned, education-based and coordination centered services. Such as; ICU (intensive care unit) nurses perform critical tasks including continuous vital sign monitoring, ventilator management and emergency interventions. Outpatient clinic nurses are responsible for health education, routine assessments and care coordination.

202210035 Ayşe Ulga  
202210040 Hamide Yeşilyurt  
202210018 Münteha Kırmacı  
202210185 Nurcan Çelik

Team 11

Wong's Nursing Care of infants and children.

Nurses should plan care according to the child's age and developmental stage (for example, the needs of an infant differ greatly from those of an adolescent) involving the family in the care process positively impacts the child's recovery. Tools such as play therapy, storytelling, and visual materials help the child feel safer in the hospital. Nurses should reduce children's fears about hospitalization by understanding them and providing reassurance.

202210200 Abbas Osmanoglu

202110148 Amina Fazlieva

202110175 Ayşe Abbas

202110187 Güzel Haşım

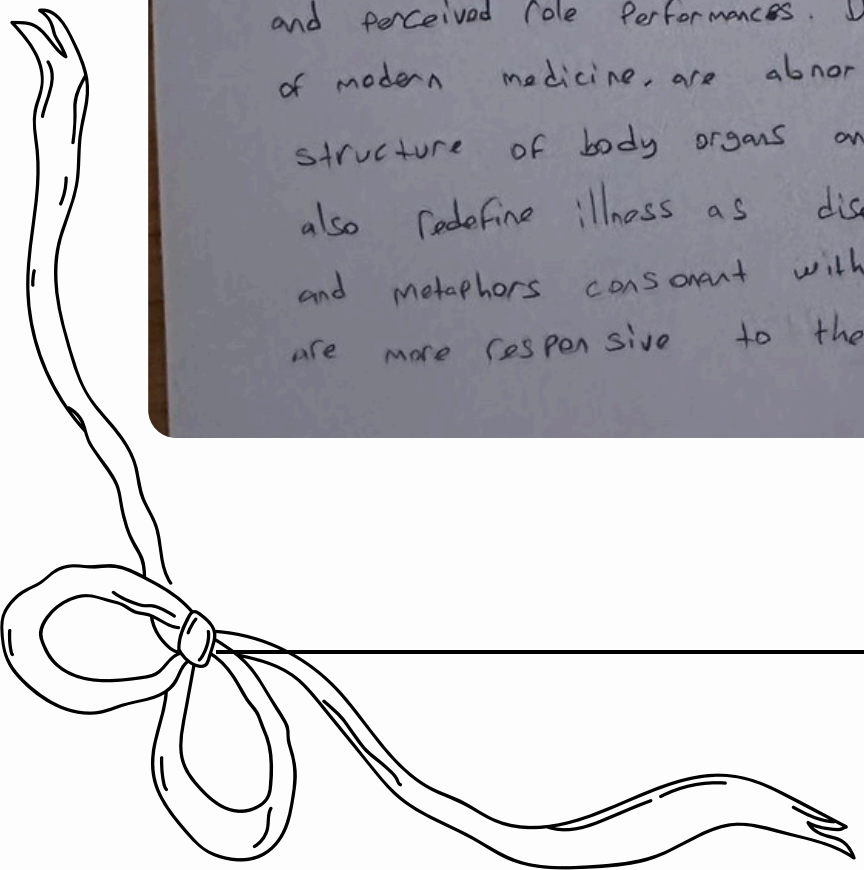
## Team 12

Disease and illness Distinctions between professional and popular ideas of sickness

The dysfunctional consequences of the Cartesian dichotomy have been enhanced by the power of biomedical technology. Technical virtuosity reifies the mechanical model and widens the gap between what patients seek and doctors provide.

Patients suffer illnesses; doctors diagnose and treat diseases. Illnesses are experiences of discontinuities in states of being and perceived role performances. Diseases, in the scientific paradigm of modern medicine, are abnormalities in the function and/or structure of body organs and systems. Traditional healers also redefine illness as disease: because they share symbols and metaphors consonant with lay beliefs, their healing rituals are more responsive to the psychosocial context of illness.

202210067 Beyza Sıla Eroğlu  
202110172 Davut İbiş  
202210121 Gözde Karahan  
202110197 İbrahim Demir  
202110074 Mehmet Çoban  
202210121 Musa Atay  
202210199 Şah Veli Hüseyini



---

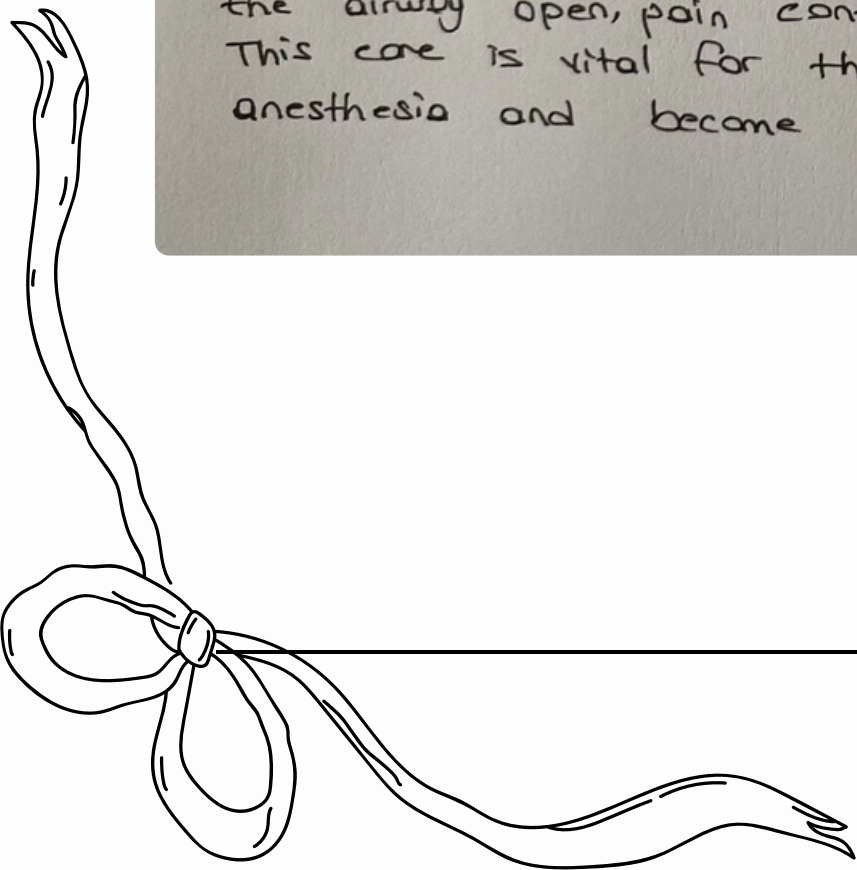
# Team 13

## PRE AND POST OPERATIVE PATIENT CARE DESCRIBE

Preoperative nurses serve as specialized coordinators, preparing patients physically and psychologically for surgery. Implementing a structured preoperative nursing care model has been shown to enhance patient satisfaction, safety and quality of care.

The most important part of postoperative care is the care provided in the recovery unit; it includes closely monitoring the patient's breathing, circulation and level of consciousness, keeping the airway open, pain control and early detection of complications. This care is vital for the patient to wake up safely from anesthesia and become stable.

202210139 Ayşegül Budak  
202210137 Didem Özgeyik  
202210137 Selma Yıldız



---

# Team 14

International Nursing Review, Wiley Online Library (2021).

"The role of nurses during the COVID-19 pandemic."

During the COVID-19 pandemic, nurses played a crucial role not only in providing physical and emotional care, but also in educating others, adapting to expanded duties, and showing strong psychological resilience. Nurse leaders contributed to team cohesion through effective communication. These roles were essential in sustaining healthcare systems during the crisis.

202110149 Eda Risngits

